

Exploring your Data with Power View

Presented By: Jessica M. Moss
jmoss@captechconsulting.com

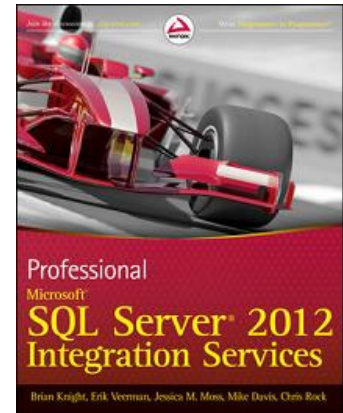
Jessica M. Moss



BI/DW Architect



Jessica M. Moss



Co-author



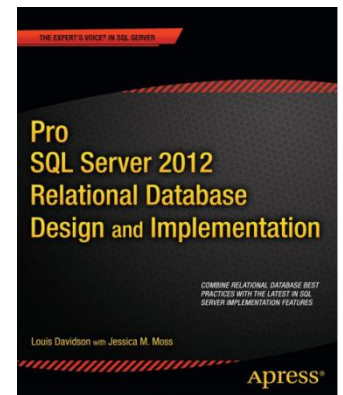
**SQL Server MVP
2008-present**



@jessicammoss



www.jessicammoss.com



Co-author

Agenda

- What is Power View?
- System Requirements
- Data Requirements
- Grids
- Visualizations
- Filtering

What is Power View?

“Power View, a feature of SQL Server 2012 Reporting Services Add-in for Microsoft SharePoint Server 2010 Enterprise Edition, is an interactive data exploration, visualization, and presentation experience”

- Ad-hoc data visualization tool
- Allows data exploration and analysis for end users
- Can be used through the web or exported to PowerPoint
- Product's name contains a "space"

Power View System Requirements

- Microsoft SharePoint Server 2010 Enterprise Edition
- SQL Server 2012 Reporting Services
 - Enterprise or Business Intelligence
- Domain computer and accounts
- Internet browser that supports Silverlight

Power View Data Requirements

- A data model made from:
 - PowerPivot model workbook
 - SQL Server 2012 Analysis Services tabular model (BISM model)
- Power View is launched directly from the model in SharePoint



DEMO

Grids

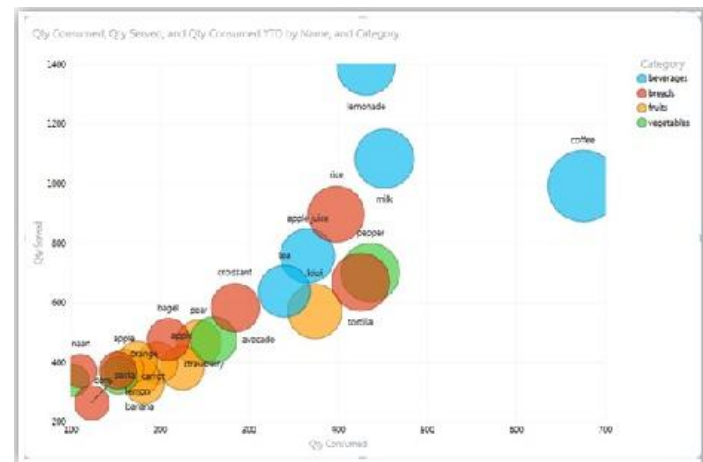
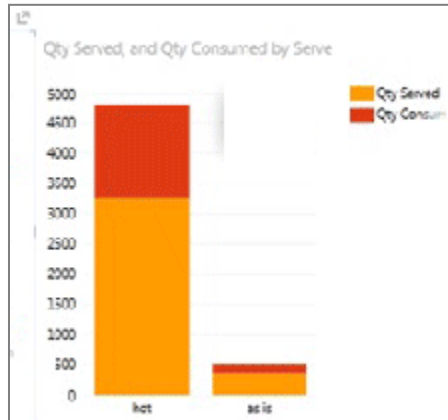
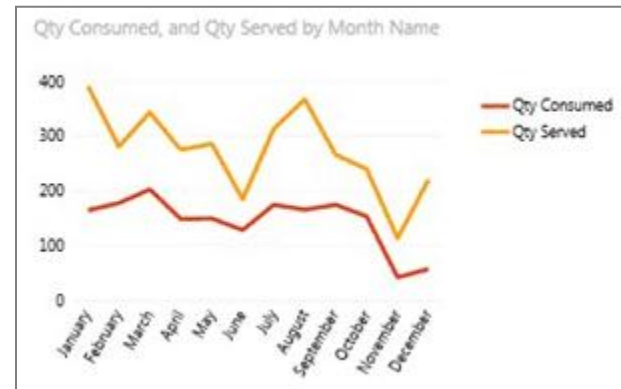
- Table
- Matrix

County	County...	Per Capita Income	Population	Sales	State	Transactions
Clark County		27,004.00	438000	31,461,730.95	WA	1312
King County		38,562.00	1936894	292,603,476.29	WA	11394
Pierce County		25,542.00	812577	58,282,022.26	WA	2458
Snohomish County		30,372.00	712514	31,039,537.18	WA	1295
Spokane County		23,244.00	474320	29,231,722.10	WA	1228

Visualizations

○ Chart

- Column (100%, Clustered)
- Bar (100%, Clustered)
- Line
- Scatter/Bubble



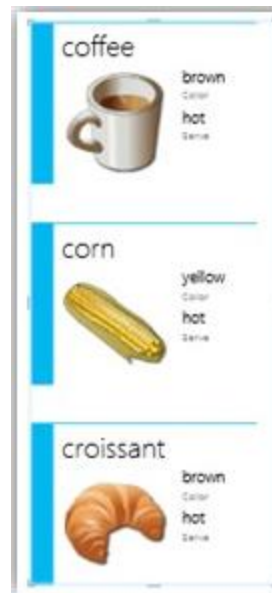
Visualizations

- Tiles



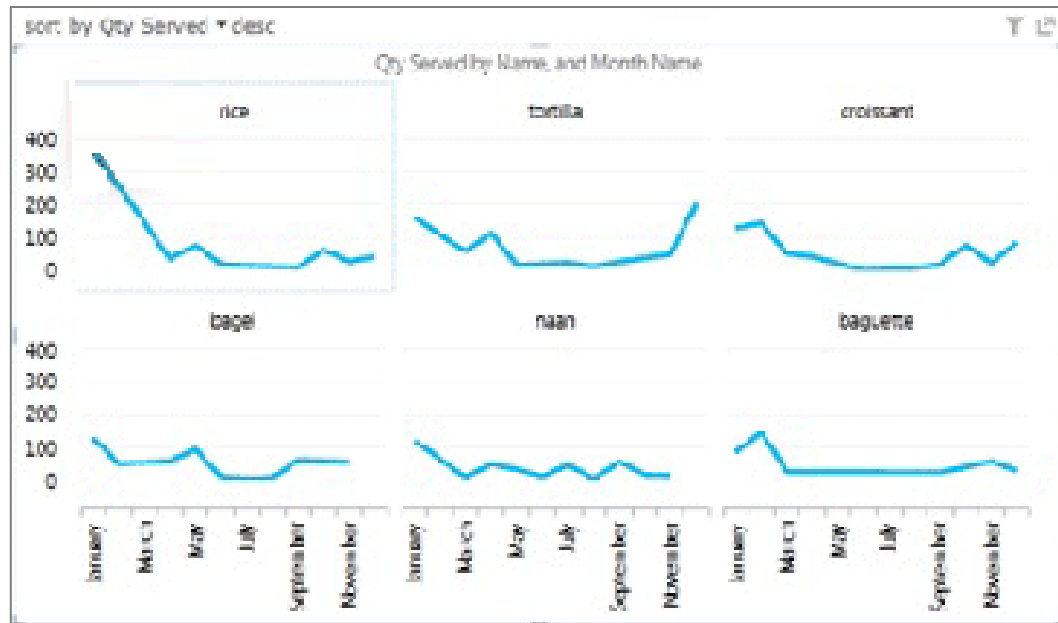
Visualizations

- Cards



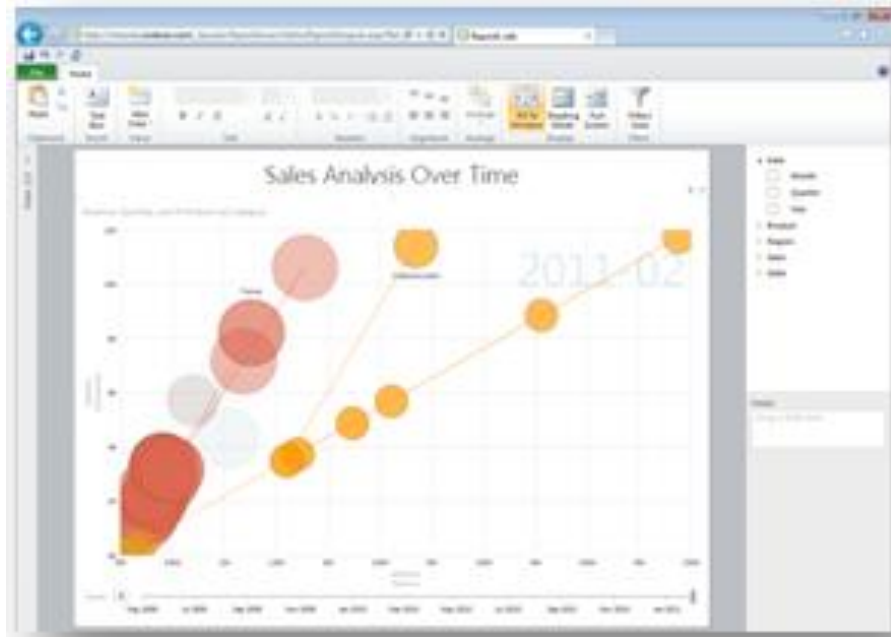
Visualizations

- Small multiples



Filtering

- Filters
- Slicers
- Highlighting





DEMO

References

- <http://mssalesdemos.com>

Questions?



Exploring your Data with Power View

Presented By: Jessica M. Moss
jmoss@captechconsulting.com